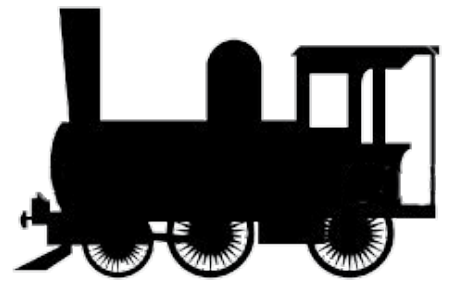


This is a FREE, all-ages welcome event!!!

"History...without it you don't exist!"

BETHEL HISTORICAL SOCIETY

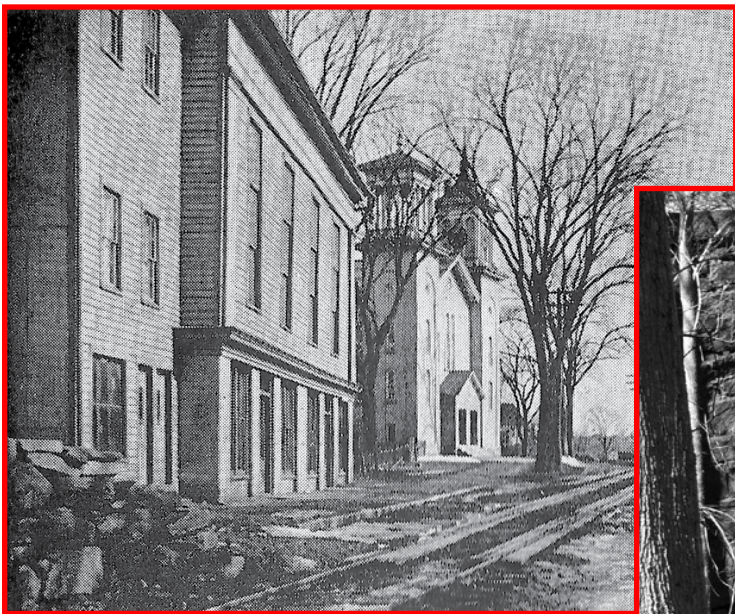
PRESENTS



RAILROADING THROUGH BETHEL

WHY THE SHEPAUG RAILROAD IS NOT THE SHEPAUG RAILROAD...

The fascinating history & continuing mystery of the Bethel to Hawleyville train line (1872 - 1907? 1911? 1915? 19....?)



Local railroad enthusiast and historian Christopher Lewis will tell stories of one of the most fascinating long lost train-lines of the Northeast.

With storytelling, photographs, maps and memorabilia from both his personal collection and gathered by the Danbury Railroad Museum you'll see and learn all about an integral part of the development of area transport, travel and trade in the late 1800s and early 1900s

Sunday May 5th, 2013 - 2:00pm - 4:00pm

@ 2nd Meeting House, 40 Main St Bethel



AMERICAN PRIDE LLC
273 Greenwood Ave - Bethel CT
www.americanpridelc.com

**Thank You to
Our Sponsors...**

LuxuryMortgage®
www.luxurymortgage.com/tfurey

<http://www.bethelhistoricalsociety.com>
facebook: bethelhistoricalsociety

Printing by The R.E. Lawlor Printing Co,
(203) 748-4144 www.relawlor.net

